



MY Casablanca

NEW luxury ship in season 2017
Designed for perfect tailor made cruise

ACCOMMODATION IN 19 LUXURY CABINS

Each cabin has two twin beds (90 x 200 cm) or one double bed (180 x 200 cm), with air-conditioning, plasma TV, free wireless internet, working tables, mirror, safety deposit box, night lamps, wooden wallboards, chair, electricity supply, safety and fire alarm installations, sanitary facilities, mini bar, hairdryer, toilet and shower with cabin.

CHARTER PRICE OF WHOLE VESSEL INCLUDES

- 7 day cruise trip around the Dalmatian coast and islands
- 10 members of the crew / room service every day, changing of the 3 towels every second day
- Registry of guests / giving information, directions
- Welcome drinks
- VAT
- Agents commission
- Port taxes
- Use of deck chairs and sundeck beds
- Use of hydro-massage pool for 6 persons
- Use of sauna and gym
- Transfer with two tenders

DECK PLAN

LOWER DECK CABINS

- 01 – double bed+1/1 extra, 18 m²
- 02 – double bed+1/1 extra, 18 m²
- 03 – double bed, 16,5 m² (separable beds)
- 04 – double bed, 16,5 m² (separable beds)
- 05 – twin beds, 15 m²
- 06 – twin beds, 15 m²
- 07 – double bed, 16 m²
- 08 – twin beds, 16 m²
- VIP cabin - double bed, 18 m²

MAIN DECK CABINS

- 09 – double bed, 17,8 m²
- 10 – twin beds, 15 m²
- 11 - double bed, 16,5 m²
- 12 – twin beds, 15 m²
- 13 – double bed, 15 m² (separable beds)
- 14 – double bed, 15 m² (separable beds)
- 15 – double bed, 15 m² (separable beds)
- 16 – double bed, 13,8 m²
- 17 - twin beds, 13,8 m²
- 18 - double bed (separable beds), 18 m²
- 19 - single bed cabin for tourleader, 9 m²

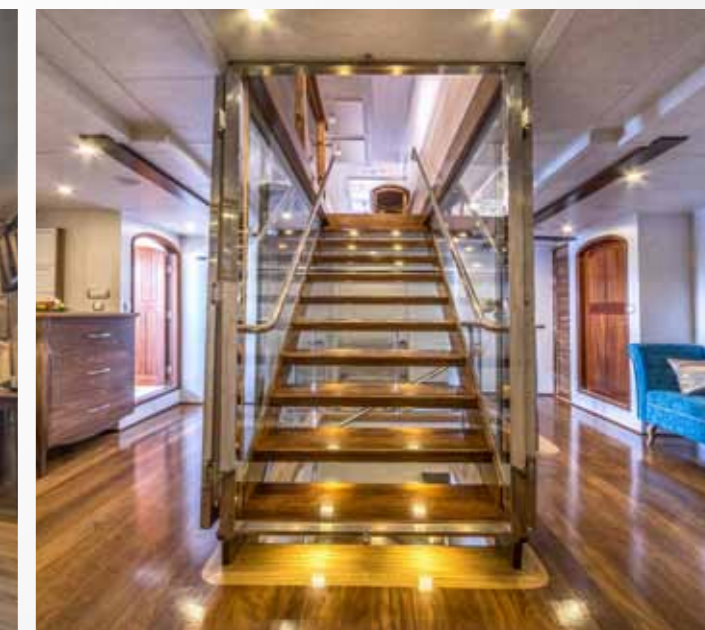
UPPER DECK

- Salon restaurant
- Terrace
- Piano lounge
- Salon for crew
- Kitchen
- Computer corner
- Sun deck area

SUN DECK

- Wellness-massage area
- Gym
- Pool for 8 persons
- Sauna
- Sundeck beds
- Main bridge
- Bar

Public areas: outside terrace for 40 persons, inside restaurant for 40 persons, lounge piano bar, massage pool, massage room, sauna, wellness and gym zone, 250 m² sundeck area.





MY Casablanca

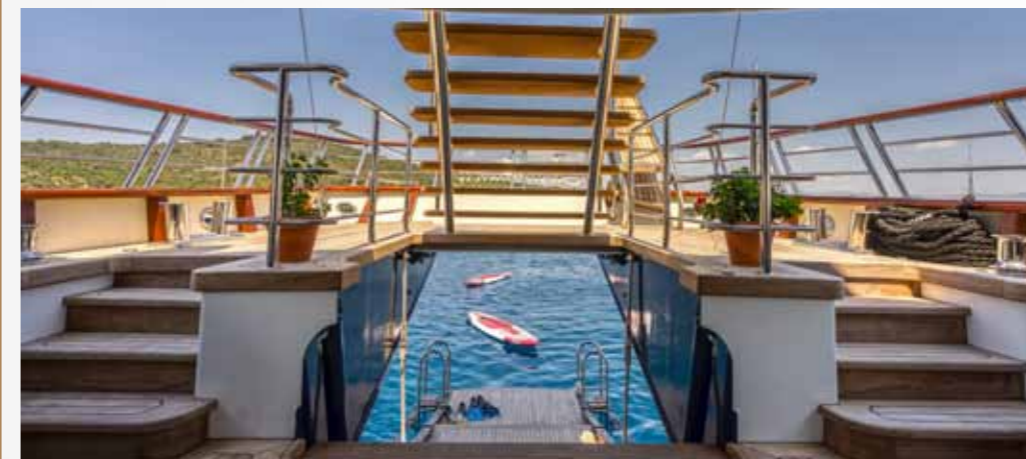
OPTIONAL SERVICES

- ◉ Cruise manager on board
- ◉ Selection of menus
- ◉ Creation of own cruising route
- ◉ Guided tours
- ◉ Transfers
- ◉ Hiking
- ◉ Holistic wellness cruise
- ◉ Massage on board
- ◉ Food & Wine tours
- ◉ Winery presentations
- ◉ Incentive programmes/ Business meetings
- ◉ Events
- ◉ Weddings

FOOD OPTION

- ◉ Obligatory - Half board (breakfast plus 1 meal per day-lunch)*
- ◉ Full board (breakfast plus 2 meals per day)*

* *included dinner first night and Dalmatian dinner last night of the cruise.*



TEHNICAL SPECIFICATION

Year: 2016

Hull material: Stainless steel

Deck material: Stainless steel, Teak

Superstructure: Mahogany

Type: Motor yacht

Engine: "Scania" type engines, 2 X 550 Hp

Generators: 2x30 kW, 22 kW, installed ultra silencer

Engine Shaft generator 40 kW

24 Volt electrical system

Automatic Inverter / Battery charger

220 Volt shore supply connection

Speed: 10/13 Knots

Flag: Croatian

LOA: 51,07 m

Beam: 8,80 m (ft)

Draft: 3,00 m (ft)

Fuel tanks: 18 m3

Water tanks: 80 m3

10 members of crew

Two tenders for 25 +12 persons

Home port: Split, Croatia

☪ CASABLANCA LAYOUTS



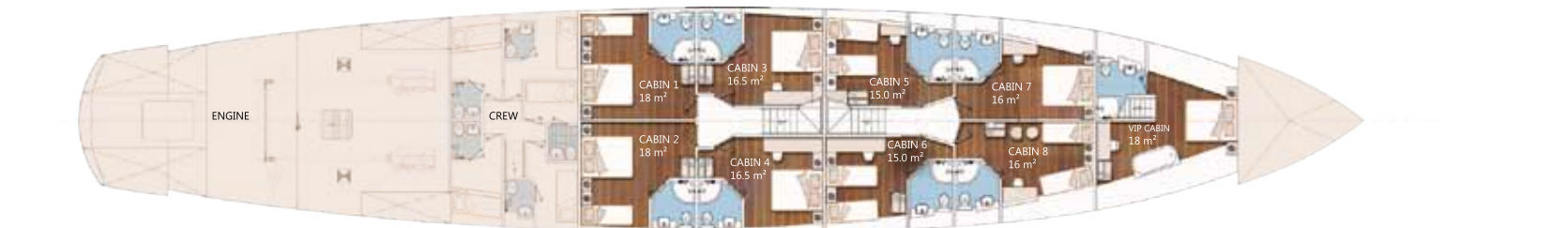
Sun deck



Upper deck



Main deck



Lower deck